

2020 Census

Resources for Congressional Offices

February 7, 2019

Steve Jost

Subject Matter

jost@teamsubjectmatter.com

2020 Census

U.S. Constitutional Mandate, Article 1, Section 2

Apportion seats in the U.S. House of Representatives

Conduct redistricting at the federal, state, and local levels

Distribute over \$883 billion federal dollars to state and local governments <https://gwipp.gwu.edu/counting-dollars-2020-role-decennial-census-geographic-distribution-federal-funds>

Increasingly diverse and growing population

Confidential

Responses are protected by Federal Law

Responses are only used to produce statistics

The goals of the Census Integrated Communication Program:

- Improve the Self Response Rate
- Improve Cooperation with Enumerators
- Improve Overall Accuracy and Reduce the Differential Undercount

2020 is First On-Line Census – First Multi-Mode Census

Three ways to respond:

- On Line (60%)
- Mail Paper Form (25%)
- Over the Phone (15%)

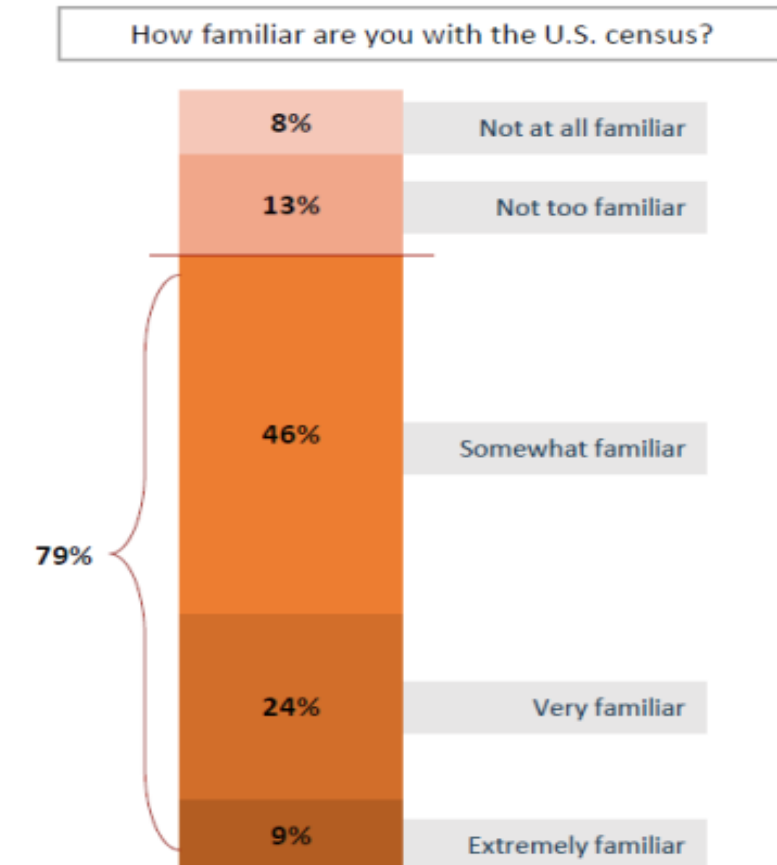
Predictors of Low Self Response to Census

1. Vacant units
2. Multi-family Housing Units
3. Renter Occupied Units
4. Occupied Units with More Than 1.5 Persons Per Room
5. Households that are Not Husband/Wife Families
6. Occupied Units with No Telephone Service
7. Adults that are Not High School Graduates
8. People Below Poverty
9. Households with Public Assistance Income
10. People Unemployed
11. Linguistically Isolated Households
12. Occupied Units Where Householder Recently Moved Into Unit

New for 2020

13. No access to internet

Many know the census basics but not much more

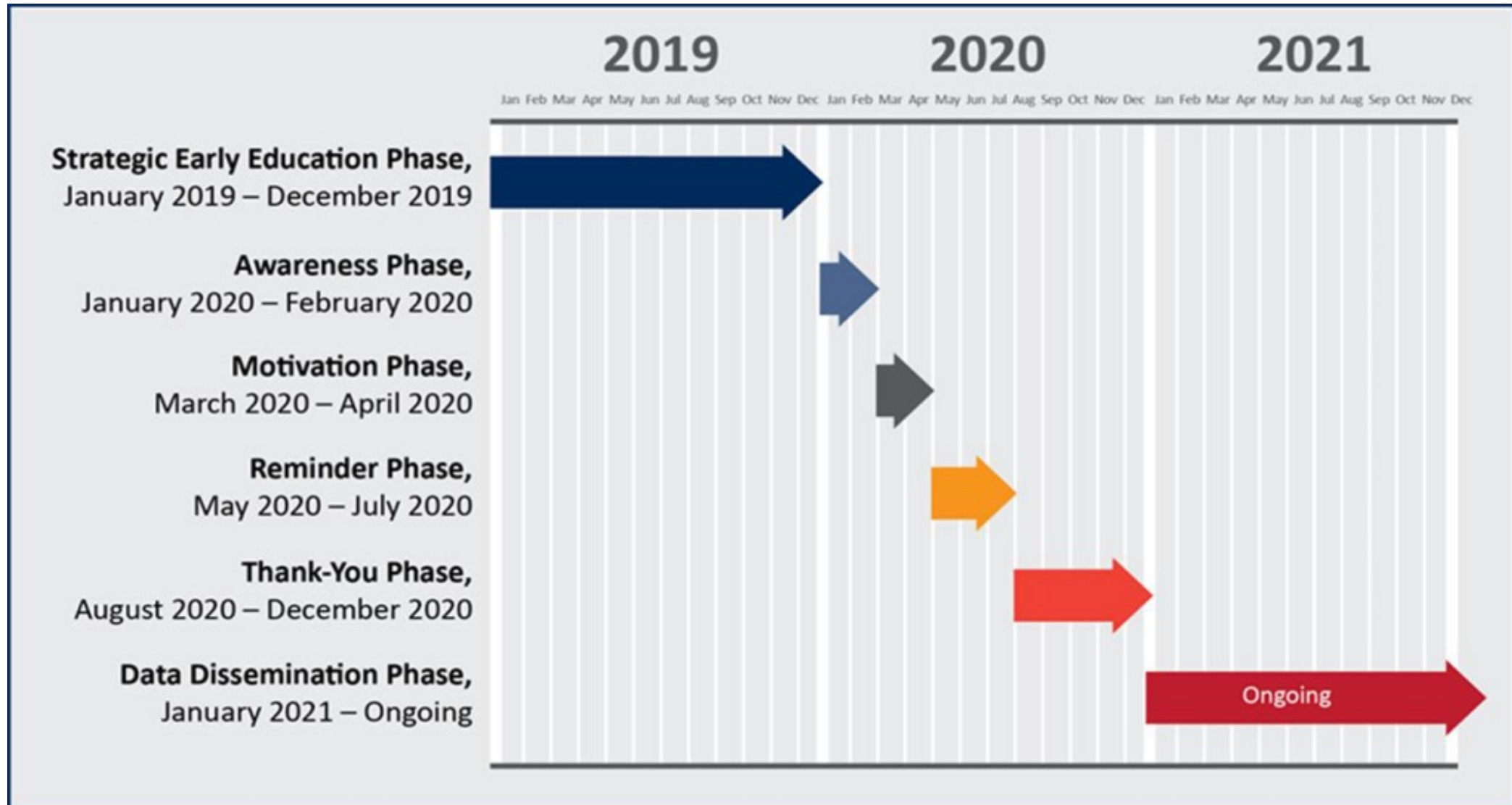


In their own words

“

[What comes to mind when I hear 'census'?] I don't know. Isn't that like the people that want to know like everything? They send you letters to your house.”
— American Indian and Alaska Native

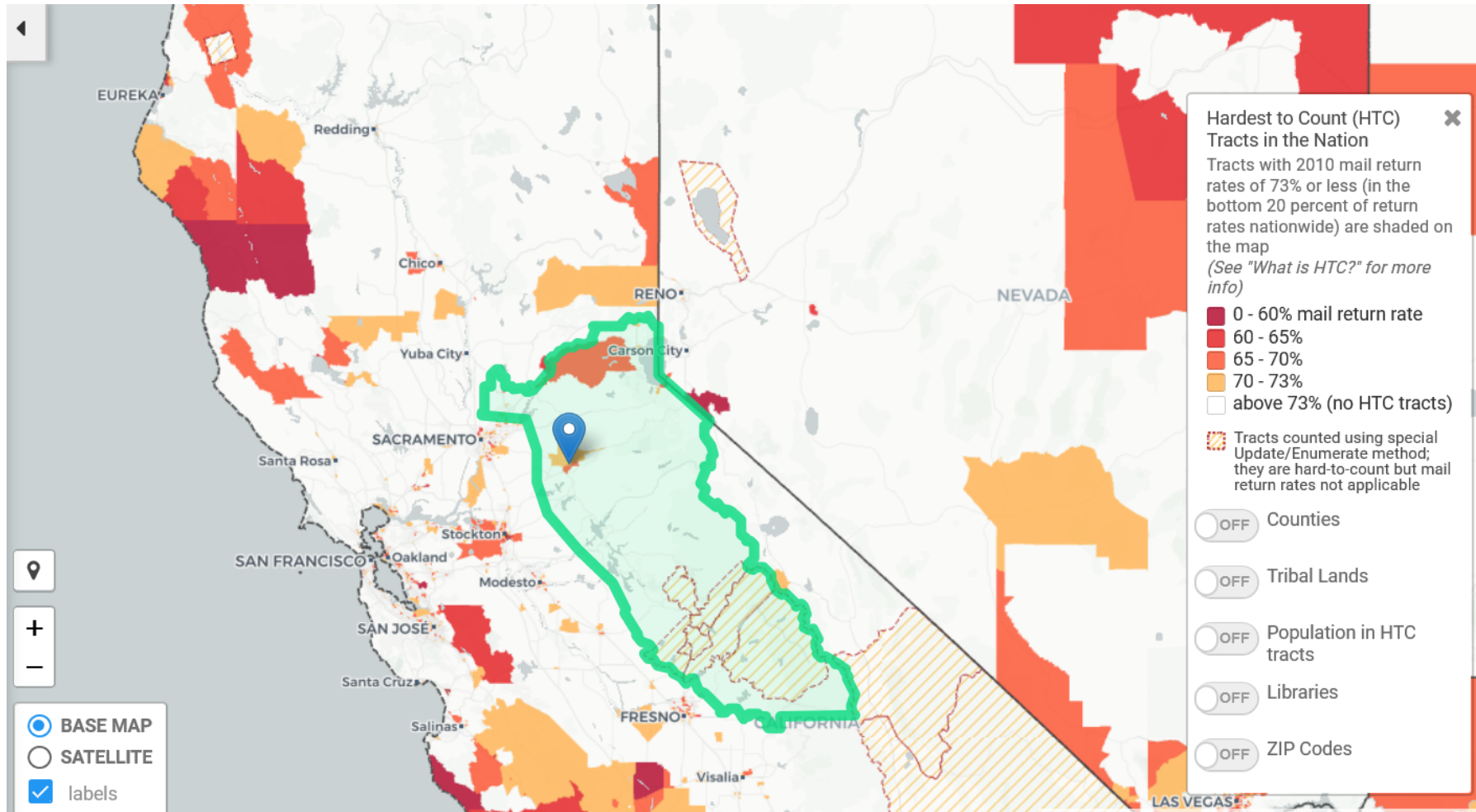
Census Outreach Plan





<https://www.census.gov/mycd>

Census Hard To Count Mapper



email: cunymapping@gc.cuny.edu

phone: 212-817-2033

website: www.gc.cuny.edu/urbanresearchmaps

<https://www.censushardtocountmaps2020.us/>

2020 Toolkit

WHAT EVERYONE SHOULD KNOW ABOUT 2020

Once a decade, America comes together to participate in the decennial census, creating national awareness of the census and statistics. This census provides the basis for reapportioning Congressional seats, redistricting, and distributing billions of dollars in federal funding to support your state, county, and community's vital programs.

We included a printable version of "Census 101" fast facts to share with your community on pages 18-19.

Everyone counts.

The census counts every person living in the U.S. once, only once, and in the right place.



It's about fair representation.

Every 10 years, the results of the census are used to reapportion the House of Representatives, determining how many seats each state gets.



It's in the Constitution.

The U.S. Constitution requires a census every 10 years. The census covers the entire country and everyone living here. The first census was in 1790.



Your data are confidential.

Federal law protects your census responses. Your answers can only be used to produce statistics.

By law we cannot share your information with immigration enforcement agencies, law enforcement agencies, or allow it to be used to determine your eligibility for government benefits.



It's about redistricting.

After each census, state officials use the results to redraw the boundaries of their congressional and state legislative districts, adapting to population shifts.



It's means \$675 billion.

Census data determine how more than \$675 billion are spent, supporting your state, county and community's vital programs.



<https://www.census.gov/partners/toolkits.html>

How Your Office Can Help

Content on your Website

Host a Townhall

Newsletter Content

Press Release

Join Complete Count Committees

Do PSAs or Local Access TV

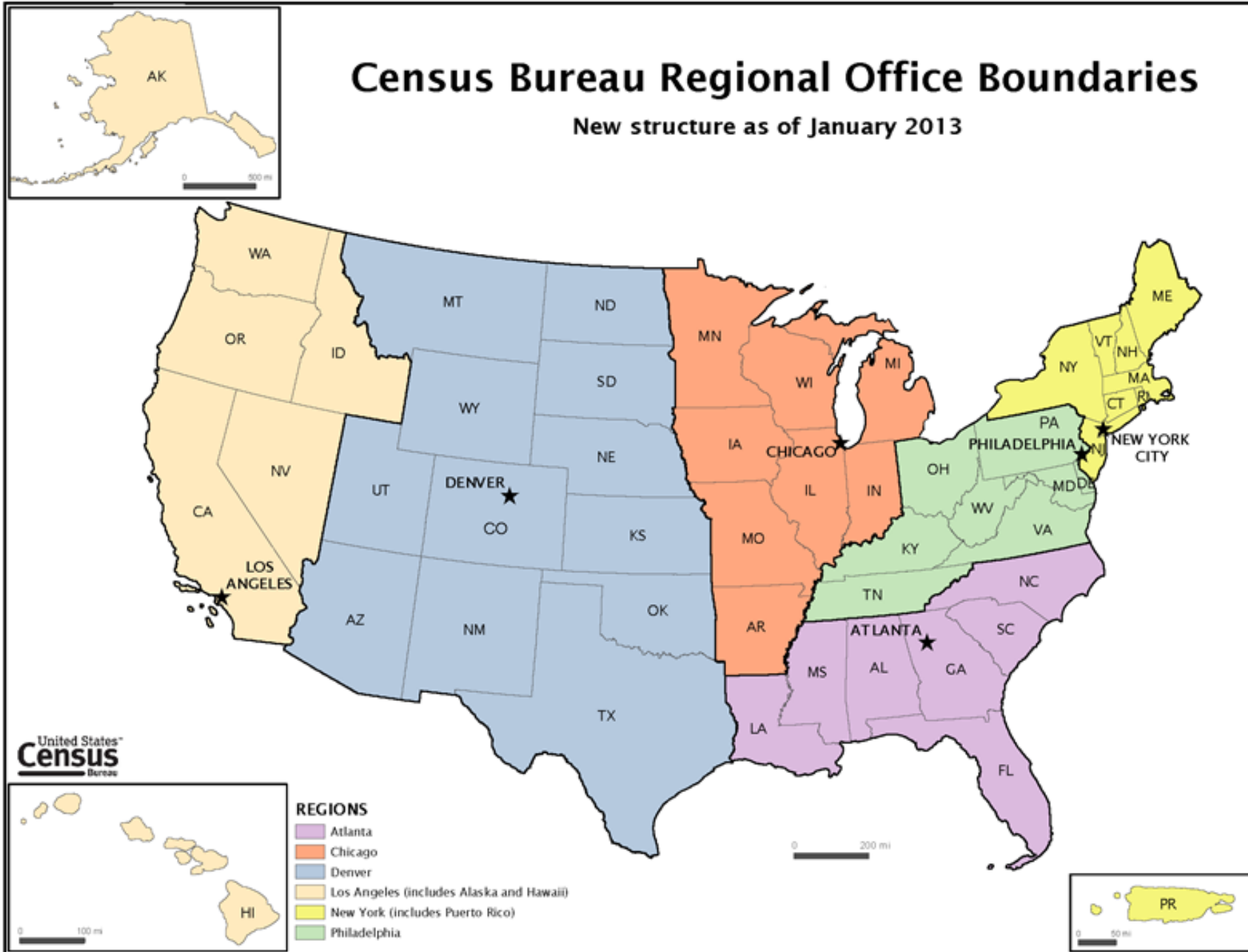
Host Workshops/Rallies

Census Office of Congressional and Intergovernmental Affairs

If you seek additional information, or to submit casework on behalf of a constituent, contact by phone at 301-763-6100, by email cao@census.gov, or by fax 301-763-3780.

Census Bureau Regional Office Boundaries

New structure as of January 2013



United States
Census
Bureau

REGIONS

- Atlanta
- Chicago
- Denver
- Los Angeles (includes Alaska and Hawaii)
- New York (includes Puerto Rico)
- Philadelphia

Atlanta Regional Office

George Grandy Jr., Regional Director

101 Marietta Street, NW, Suite 3200
Atlanta, GA 30303-2700
(404) 730-3832 or 1-800-424-6974
FAX: (404) 730-3835
E-mail:

Atlanta.Regional.Office@census.gov

States Served

Alabama
Florida
Georgia
Louisiana
Mississippi
North Carolina
South Carolina

Chicago Regional Office

Marilyn A. Sanders, Regional Director

1111 W. 22nd Street, Suite 400
Oak Brook, IL 60523-1918
(630) 288-9200 or 1-800-865-6384
FAX: (630) 288-9288
E-mail:

Chicago.Regional.Office@census.gov

States Served

Arkansas
Illinois
Indiana
Iowa
Michigan
Minnesota
Missouri
Wisconsin

Denver Regional Office

Cathy L. Lacy, Regional Director

6950 W. Jefferson Avenue, Suite 250
Lakewood, CO 80235
(720) 962-3700 or 1-800-852-6159
FAX: (303) 969-6777
E-mail: Denver.Regional.Office@census.gov

States Served

Arizona
Colorado
Kansas
Montana
Nebraska
New Mexico
North Dakota
Oklahoma
South Dakota
Texas
Utah
Wyoming

Los Angeles Regional Office

Julie Lam, Regional Director

15350 Sherman Way, Suite 400
Van Nuys, CA 91406-4224
(818) 267-1700 or 1-800-992-3530
FAX: (818) 267-1714
E-mail: Los.Angeles.Regional.Office@census.gov

States Served

Alaska
California
Hawaii
Idaho
Nevada
Oregon
Washington

New York Regional Office

Jeff T. Behler, Regional Director

32 Old Slip, 9th Floor
New York, NY 10005
(212) 584-3400 or 1-800-991-2520
FAX: (212) 584-3402
E-mail: New.York.Regional.Office@census.gov

States Served

Connecticut
Maine
Massachusetts
New Hampshire
New Jersey
New York
Puerto Rico
Rhode Island
Vermont

Philadelphia Regional Office

Fernando E. Armstrong, Regional Director

100 South Independence Mall West
Suite 410
Philadelphia, PA 19106-2320
(215) 717-1800 or 1-800-262-4236
FAX: (215) 717-0755
E-mail: Philadelphia.Regional.Office@census.gov

States Served

Delaware
District of Columbia
Kentucky
Maryland
Ohio
Pennsylvania
Tennessee
Virginia
West Virginia

Area Census Offices Information

<https://2020census.gov/jobs/locations/national-info.html>

Questions?